

# CONVERSION MASTER PREVIEW

## USERS OF CONVERSION MASTER:

- ◆ **ENGINEERS - ARCHITECTS - SCIENTISTS - CONTRACTORS - DRAFTSMEN - DETAILERS**
- ◆ **CARPENTERS - FITTERS - FABRICATORS - SURVEYORS - CONSTRUCTION INDUSTRY**
- ◆ **AUTO MANUFACTURING & DESIGN - CHEMICAL COMPANIES - AUTOCAD USERS**
- ◆ **COMMUNICATIONS COMPANIES - PUBLIC UTILITIES - ENVIRONMENTAL**
- ◆ **PHARMACEUTICAL - ELECTRONICS - US TO METRIC CONVERSIONS**

## CONVERSION MASTER'S RECOGNITION:

★★★★★



**PC MAGAZINE**

Ziff-Davis Interactive gives Conversion Master a five star rating  
Ziff-Davis 1995 Shareware Awards selected Conversion Master as Runner-up in the Math and Science category. (Over 1300 entries in 14 categories)

**WINDOWS  
MAGAZINE**

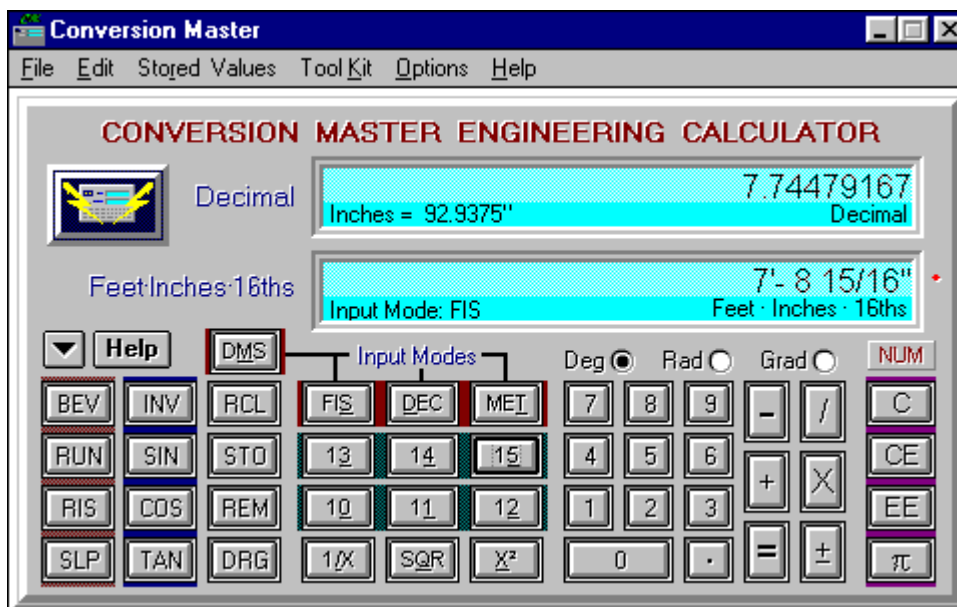
PC Magazine Shareware Awards recognition (December 5, 1995 issue)

**U.S. NEWS  
& WORLD REPORT**

Windows Magazine selected Conversion Master as Superior Shareware (November 95 issue)

U.S. News & World Report choose Conversion Master as a downloadable notable (January 16, 1995 issue)

## CONVERSION MASTER FEATURES:



## Main Window

- ◆ ALLOWS INPUT IN FOUR BASIC MODES:
  - Feet-Inches-Sixteenths Mode (**FIS** key)
  - Decimal Mode (**DEC** key)
  - Metric Mode (**MET** key)
  - Degrees Minutes & Seconds Mode (**DMS** key)
- ◆ Input data in any mode then change to a different mode in the middle of an operation (i.e. multiply Meters x Feet)
- ◆ Dimensional calculations are performed without the need of charts or tables, thereby increasing accuracy and production
- ◆ Uniquely designed keypad layout that makes dimensional calculations easy. Unlike a standard calculator the numeric keys are numbered from 0-15. The extended numeric keys (10-15) allow Inches and Sixteenths input with a single keystroke
- ◆ SOLVES RIGHT TRIANGLES DISCERNINGLY USING THE **RUN, RIS, SLP & BEV** KEYS
- ◆ Uses **Dual Displays** allowing access to more information at one time than any other calculator by utilizing three independent display blocks in each of its two main display windows
- ◆ DISPLAYS TASK DEPENDENT INFORMATION
  - When in the **DMS** mode, Conversion Master will display Degrees-Minutes-Seconds, Decimal of Degrees, Radians and Grads all concurrently
  - When in the **FIS** mode (Feet Inches Sixteenths input mode), Conversion Master will continue giving the input value in Decimal of Feet, Decimal of Inches and Feet Inches Sixteenths in three of its display block areas
  - When solving right triangles Conversion Master will simultaneously display the Bevel/Tangent, Run/Adjacent, Rise/Opposite, Slope/Hypotenuse and the angle in Degrees, Minutes and Seconds when any of two values are known
  - When operating the trigonometric keys **SIN, COS, TAN** and their inverses, Conversion Master displays output in radians, grads, degrees, degrees minutes & seconds along with the angles **SIN, COS, TAN** or their inverses (dependent upon the use of the **INV** key)
- ◆ Remembers all last entered data. When Conversion Master is re-opened the data is just as you left it
- ◆ POPUP MENUS TO SPEED CALCULATIONS AND USAGE. Examples:
  - Left mouse click over the **RCL** key invokes popup menu for view and recall of any stored values
  - Left mouse click over the **STO** key invokes popup menu for input to 18 storage locations
  - Right mouse click over operator keys (**+, -, X, /**) brings up the storage recall popup menu for quick recall of the 18 stored values.

- Right mouse click over the main calculator display windows, **QuickList** or the **Conversion Database** display windows invokes the edit popup menu for the copying and pasting of values
  - Right mouse click over any calculator background area that isn't a control invokes the **TooKit** popup menu for tool selection
  - Right mouse click over the decimal point key brings up the accuracy setting popup menu allowing quick setting of decimal and fractional accuracy
- ◆ CONVERSION MASTER'S CALCULATOR CAN BE FULLY KEYBOARD DRIVEN
  - ◆ Although Conversion Master is designed as a dimensional calculator, it can also be used as a standard calculator. The second display can be hidden from view while working in the **MET** and **DEC**. The second display will automatically reactivate when in the **FIS**, **DMS** mode or when a right triangle is solved
  - ◆ CONVERSION MASTER HAS EXTENSIVE ON-LINE DOCUMENTATION
    - Help system gives you a graphical walk through all of its features
    - Many on-line examples for solving practical problems
    - Glossary gives access to useful information
  - ◆ CONVERSION MASTER'S TOOLKIT TOOLS ARE TIGHTLY INTEGRATED WITH THE CALCULATOR
    - When activated ToolKit windows attach themselves to the main calculator window
    - Each ToolKit tool receives its input from the calculator
    - Calculated data from each tool can be transferred to the calculator

## CONVERSION MASTER TOOLKIT:

- ◆ SOLVES OBLIQUE TRIANGLES DISCERNINGLY USING ITS **OBLIQUE SOLVER**

The screenshot shows the 'Oblique Triangle Solver' interface. It features a central diagram of a triangle with sides labeled 'a', 'b', and 'c', and angles labeled 'A', 'B', and 'C'. To the right of the diagram, there are input fields for 'Sides' and 'Angles'. The 'Sides' section has three rows: 'a' with a value of 35'-9 1/16", 'b' with 53'-3 1/16", and 'c' with 74'-3 13/16". The 'Angles' section has three rows: 'A' with 26°-32'-56", 'B' with 41°-44'-16", and 'C' with 111°-42'-48". Below the diagram, there is a 'Perimeter of Triangle #1' field showing 163'-3 15/16". At the bottom of the window are buttons for '<< Less', 'Help', 'Clear', and 'Goto Triangle #2'. To the left of the main window, there is a vertical stack of three calculator displays, each showing a triangle icon and a value: 163'-3 15/16", 884.522, and 163'-3 15/16".

### Oblique Solver

\*After an oblique triangle is solved its input buttons are hidden from view shown here for illustrative purposes

- **The Oblique Solver** monitors your input for validity & detects ambiguous cases and alerts you to them
- Once any three values are known the oblique triangle is automatically solved calculating all remaining sides, angles & area
- **The Oblique solver** accepts input directly from the calculator enabling input in any of the calculators input modes

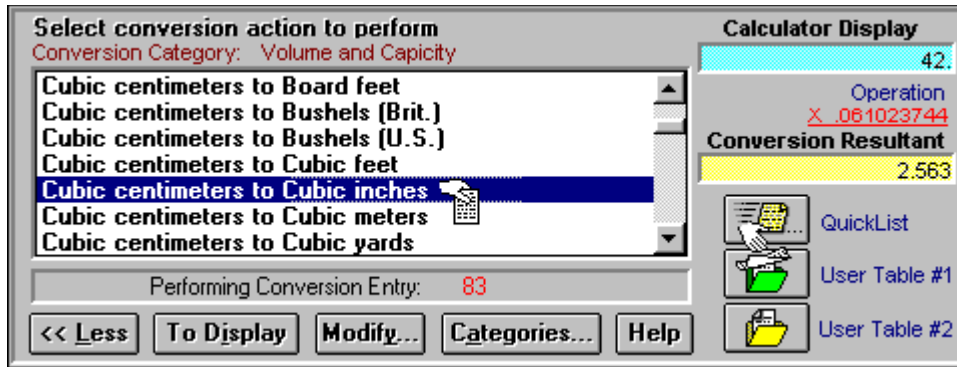
- Calculated values can be converted to a different format at any time (i.e. **FIS** to **MET**. ect...) or transferred directly to the calculator, or copied to the clipboard
- **The Oblique Solver** intellisense input buttons serve as flags to the user showing what values were input, what areas are available for input and which were calculated

◆ SOLVES CIRCLES DISCERNINGLY USING ITS **CIRCLE SOLVER**

**Circle Solver**

\*After a circle is solved its input buttons are hidden from view shown here for illustrative purposes

- **The Circle Solver** constantly monitors your input for validity
  - Once any two values are known the circle is automatically solved calculating all remaining values
  - **The Circle Solver** accepts input directly from the calculator enabling input in any of the calculators input modes
  - **The Circle Solver** calculates a wealth of other information pertaining to the solved circle
  - Calculated values can be converted to a different format at any time (i.e. **FIS** to **MET**. ect...) or transferred directly to the calculator, or copied to the clipboard
  - **The Circle Solver** intellisense input buttons serve as flags to the user showing what values were input, what areas are available for input and which were calculated
- ◆ HAS OVER 3200 DIFFERENT UNIT CONVERSIONS BUILT INTO ITS **CONVERSION DATABASE**

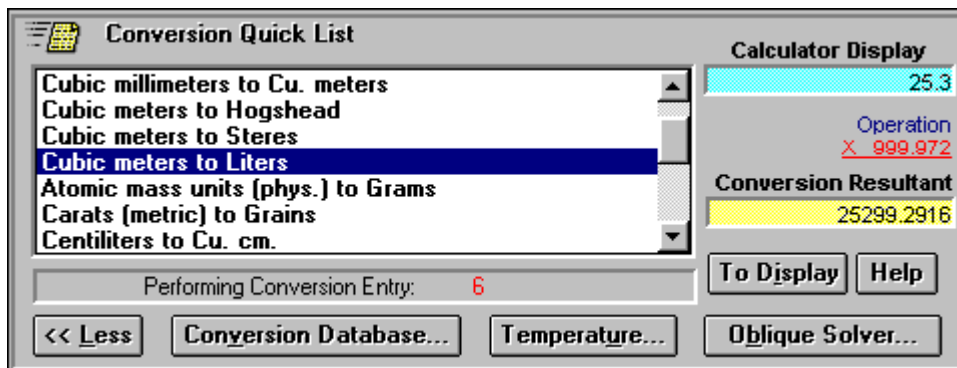


## Database Window

- Conversion database is fully modifiable
- Ability to add your own conversion factors
- Conversions are organized into 14 meaningful categories

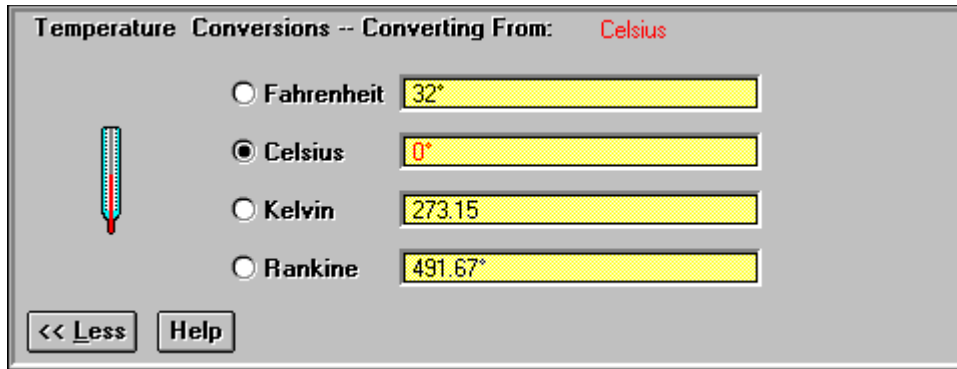
Area	Electric	Energy
Flow	Force	Time
Light	Math	Pressure
Velocity	Weight & Mass	Power & Work
Volume & Capacity	Length & Distance	User Lists 1 & 2

- Drag and drop conversions to user files or the **QuickList**
  - Shortcut buttons to the **QuickList** and User files
  - Transfer conversion resultants directly to the Calculator
  - Right mouse click over display windows brings popup menus for copying and pasting values
- ◆ **QUICKLIST** WILL AUTOMATICALLY REMEMBER YOUR LAST ACCESSED CONVERSIONS FOR EASY RECALL



## QuickList Window

- **QuickList** prevents searching the entire database for your most often used conversions
  - **QuickList** serves as a holding tank for the last 50 conversions used
  - Transfer conversion resultants directly to the Calculator
- ◆ CONVERSION MASTER'S **TEMPERATURE CONVERTER**



### Temperature Conversion Window

- Performs temperature conversions displaying results in Fahrenheit, Celsius, Kelvin & Rankine all concurrently.
- Receives input from main calculator display
- Transfer a resultant to the main calculator window by double clicking a resultant value
- Change input formats by clicking radio buttons

### VERSION 4.0 PRICING STRUCTURE FOR MULTIPLE COPIES:

1-4 users:	\$53.00 each	25-50	\$37.10 each
5-10	\$45.05 each	Over 50	\$31.80 each
users:			
11-25	\$39.75 each		

For site license, contact Conversion Master

### FOR MORE INFORMATION CONTACT:

Conversion Master	Compuserve: 73144,1744
11802 E. 79th St. N.	Internet: 73144.1744@Compuserve.com
Owasso OK 74055	Voice & Fax: (918)-272-5572

